

Simple/Reliable/Green/Efficient

大牧人  
Big Herdsman



## SILO

Stores feed, which can be loaded by feed truck or pneumatic feed blowing.



WEBSITE

✉ [bigherdsman@bigherdsman.com](mailto:bigherdsman@bigherdsman.com)



*POULTRY PRODUCTION*

## Technical Description

- Standard ladder with guardrails for safe operation.
- Ridges for enhanced strength and airtightness.
- Mid panel includes a slope for drainage; mid and lower cones have viewing ports secured with sealant strips for superior sealing, strength, and visibility.
- Standard components undergo a specialized galvanizing process; rubber gaskets remain functional for up to 10 years.



## Product Parameters

S/N	Nominal outside diameter (lower cone angle)		Actual diameter	Height H	Volume(m³)	Number of legs
1	Φ1.8m 67°	Layer 1	1834	4100	4.4	4
2		Layer2	1834	5000	6.8	4
3		Layer3	1834	5900	9.2	4
4	Φ2.7m 60°	Layer1	2750	4700	11.7	6
5		Layer2	2750	5600	16.9	6
6		Layer3	2750	6500	22.1	6
7		Layer4	2750	7360	27.3	6
8	Φ3.6m 60°	Layer1	3668	5700	24.5	8
9		Layer2	3668	6600	33.8	8
10		Layer3	3668	7500	43.1	8
11		Layer4	3668	8400	52.4	8

※ The conversion between the volume and tonnage of galvanized sheet silo is calculated according to the density of 0.65t/m³: tonnage = volume \*0.65t/m³.



## QINGDAO BIG HERDSMAN MACHINERY CO.,LTD

Add: Yuehe road, Konggang industrial park, Qingdao city,  
Shandong Province, PR China

Tel: +86-532-8493 3988

Website: [www.bigherdsman.com](http://www.bigherdsman.com)



SCAN QR CODE ON WECHAT



Simple/Reliable/Green/Efficient

大牧人  
Big Herdsman



## SILO ANTI-CORROSION MAT INSULATION COATING

Employs cost-effective nano anti-corrosion and insulating galvanized sheets, including base steel plate, a high-molecular conversion layer, a selective reflection insulating layer, a nano coating (acid-base protection layer), and a galvanized layer.



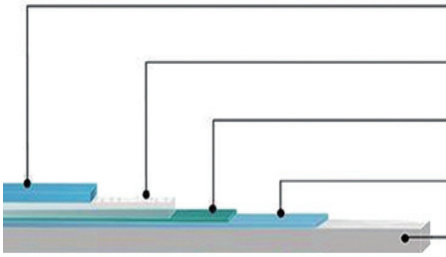
WEBSITE

✉ [bigherdsman@bigherdsman.com](mailto:bigherdsman@bigherdsman.com)



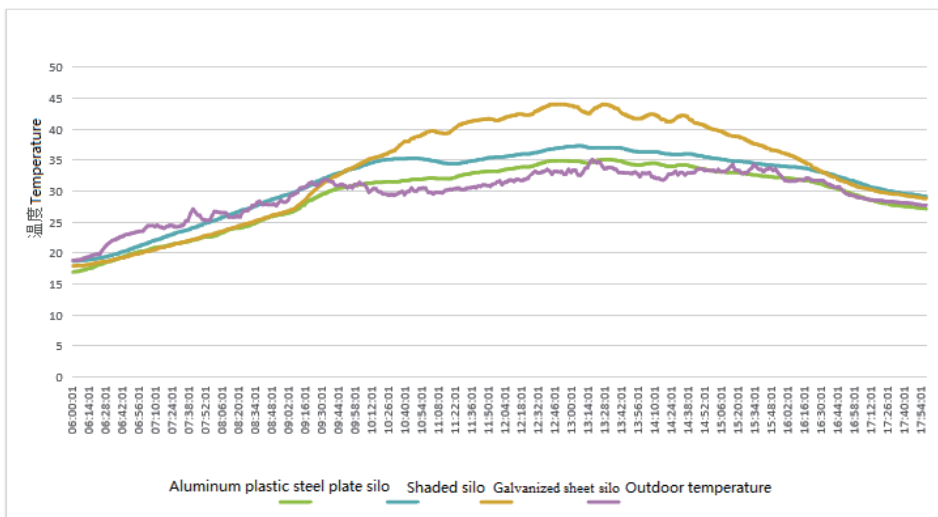
*POULTRY PRODUCTION*

## Technical Description



Name	Feature
Anti-aging PET	Anti-aging, anti-chemical corrosion, UV blocking penetration
Anti-aging adhesive	UV resistant anti-aging bonding layer
Aluminum foil layer	Resistant to UV aging, chemical corrosion
High temperature, polymer	Strong bonding, weatherability and scalability
Galvanized sheet	Double-sided galvanized layer, anti-corrosion, rust resistance

- Exceptional weather resistance, acid and alkali corrosion resistance, and insulation, extending the product's lifespan.
- Easy to install, identical to ordinary silos, eliminating secondary construction.
- Reflects 85% of heat, effectively maintaining feed temperature to reduce mold and improve feeding efficiency.



The comparative experiment of thermal insulation performance show that the aluminum plastic steel plate silo has high thermal insulation performance.

NO1.	Actual diameter	Tier	Height/m	Volume/m³	ton/t	Uprights Quantity
1	1834	1	4100	4.4	2.8	4
2		2	5000	6.8	4.4	4
3		3	5900	92	6	4
4	2750	1	4700	11.7	7.6	6
5		2	5600	16.9	11	6
6		3	6500	22.1	14.3	6
7		4	7360	27.3	17.7	6
8	3660	2	6600	33.8	22	8
9		3	7500	43.1	28	8
10		4	8400	52.4	34	8

**QINGDAO BIG HERDSMAN MACHINERY CO.,LTD**

Add: Yuehe road, Konggang industrial park, Qingdao city,  
Shandong Province, PR China

Tel: +86-532-8493 3988

Website: [www.bigherdsman.com](http://www.bigherdsman.com)

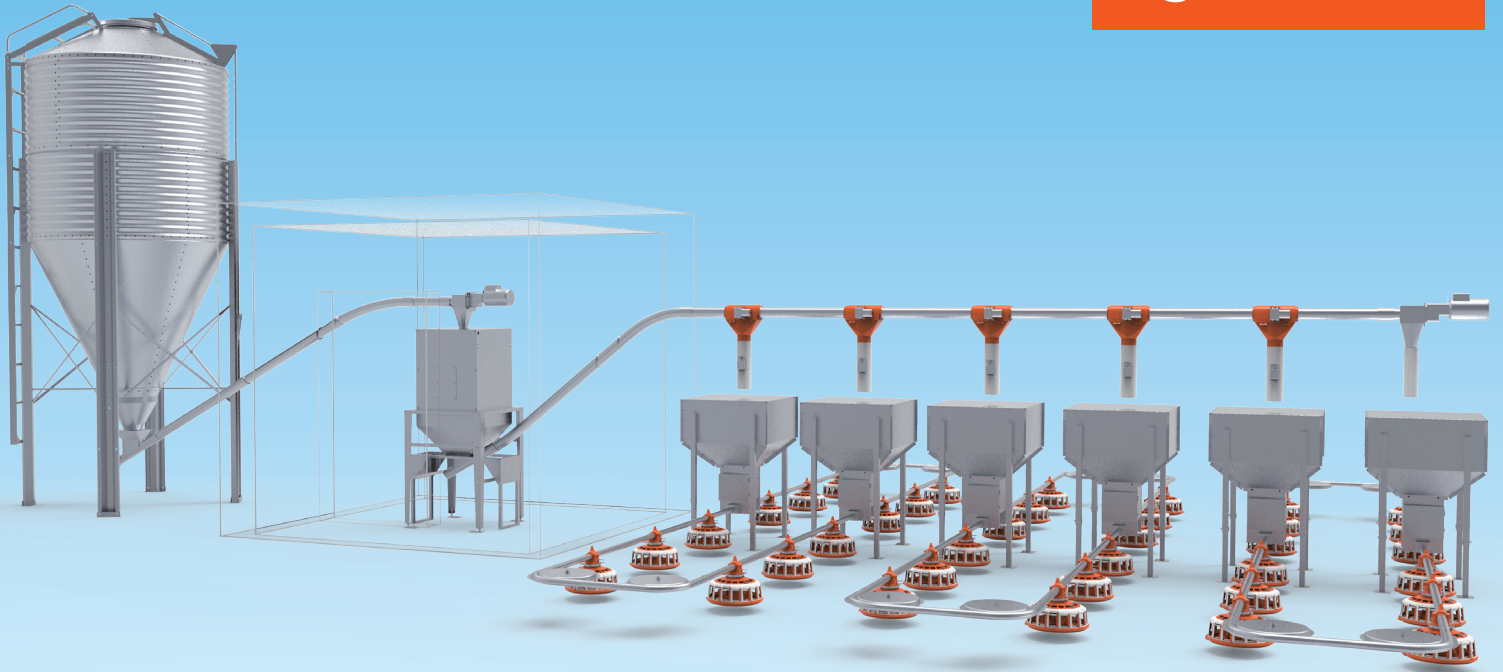


SCAN QR CODE ON WECHAT



Simple/Reliable/Green/Efficient

大牧人  
Big Herdsman



## 40K PLC WEIGHING CONTROL SYSTEM

A specialized weighing and control system for breeder farms that enables timed, targeted, and precise feeding. The weighing precision is under 0.3%



WEBSITE

✉ [bigherdsman@bigherdsman.com](mailto:bigherdsman@bigherdsman.com)



*POULTRY PRODUCTION*

## Technical Description

- Simple operation: the user inputs the required feed amount and presses the start button; the system automatically stops upon completion.
- High accuracy: advanced sensor technology and multiple error control algorithms ensure precise weighing.
- Reliability: uses PLC as the core control unit, highly suitable for poultry environments.
- Stability: digital junction box with strong electromagnetic interference resistance.



System Weighing Accuracy	0.3%
Control and feed distribution capacity	Up to 12 feed boxes
Main material of weighing bin and support body	High-galvanized-layer hot-dip galvanized sheet
Material of weighing hopper	High-strength PP
Touch screen size	7 inches
Control system	PLC

## QINGDAO BIG HERDSMAN MACHINERY CO.,LTD

Add: Yuehe road, Konggang industrial park, Qingdao city,  
Shandong Province, PR China

Tel: +86-532-8493 3988

Website: [www.bigherdsman.com](http://www.bigherdsman.com)



SCAN QR CODE ON WECHAT



Simple/Reliable/Green/Efficient

大牧人  
Big Herdsman

## MAIN FEED LINE

Spiral auger or chain-based system that transports feed from silos or bins to each sub-feeding line, achieving automatic feed distribution.



WEBSITE

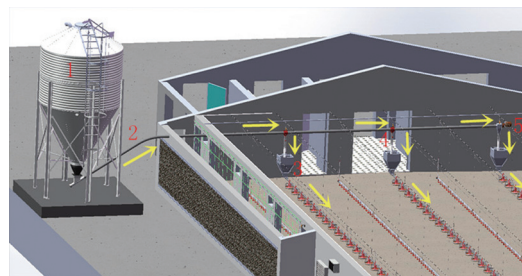
✉ [bigherdsman@bigherdsman.com](mailto:bigherdsman@bigherdsman.com)



*POULTRY PRODUCTION*

## Main Feed Line

- Italian-brand motor, aluminum alloy body, IP55-protected.
- Auger imported for stable performance.
- Nylon bends with reinforced inner arcs for wear resistance and sealing.
- Each relay station is angle-adjustable with an inspection port and sight window for easy maintenance.



### Product parameters

Specification of auger feed line	125	90		75
Motor power	1.5	0.75	1.1	0.75
Feeding capacity	5500	2100	3000	1400
Maximum conveying distance	25	40		60

## Chain Pan Main Feed Line

The feed line moves in the feeding pipe through the chain, and the nylon chain pan molded on the chain drives the feed to move in the feeding pipe, and the feed is transported from the silo or manual feed box dragged by the chain along the feeding pipe to feed drop ports, so as to achieve the purpose of automatic feed.

- The drive system is provided with overload protection, which can effectively prevent motor stalling and chain damage due to pulling;
- The chain pan is made of modified nylon, with high wear resistance and not easy to be shifted;
- The corner is made of antirust material, firm and durable.



### Product parameters

Feeding pipe diameter (mm)	Φ 101.6		Φ 60
Feeding pipe wall thickness (mm)	2.0		1.5
Feeding pipe material	Hot galvanized pipe		Hot galvanized pipe
Driving power (kw)	4	2.2	1.5
Maximum feeding capacity (kg/h)	5000		1500
Maximum conveying distance (m)	250	120	300

## QINGDAO BIG HERDSMAN MACHINERY CO.,LTD

Add: Yuehe road, Konggang industrial park, Qingdao city,  
Shandong Province, PR China

Tel: +86-532-8493 3988

Website: [www.bigherdsman.com](http://www.bigherdsman.com)



SCAN QR CODE ON WECHAT



Simple/Reliable/Green/Efficient

大牧人  
Big Herdsman

## 45 CHAIN-PAN FEEDING LINE

Moves feed along the feed pipe with a chain, whose nylon discs push feed from the feed bin to each pan, meeting both restricted and unrestricted feeding needs.



WEBSITE

✉ [bigherdsman@bigherdsman.com](mailto:bigherdsman@bigherdsman.com)



*POULTRY PRODUCTION*



## Technical Description

- Italian-made motor with aluminum alloy housing, IP55 protection.
- Nylon plus fiberglass main and driven wheels reduce wear and provide safety pins and overload protection.
- Modified-nylon chain discs offer high wear resistance and minimal displacement.
- Feed pans can be used from the entire rearing period, with adjustable width/height to prevent rooster feed theft.
- Low feed breakage rate, smooth operation, and minimal noise.
- Manual or motorized lifting options to adjust feeding height.



## Product Parameters

Pan Feedline Specification		45 Weld Pipe
Motor	Voltage (V)	380
	Frequency (Hz)	50
	Protection Class	IP55
	Power (kw)	1.5
	Speed Ratio	40
	Output Speed (r/min)	35
Chain Speed (m/min)		30
Horizontal Delivery Capacity (kg/h)		900
Max Delivery Distance (m)		300 (4 corners)
Feed Pipe Diameter (mm)		Φ 44.5
Feed Pipe Thickness (mm)		1.2
Feed Pipe Material		Hot-dip galvanized pipe
Feed Pipe Length (mm)		3040/ root

The corresponding relationship between feed pan gears and the feed quantity is shown in the following table:

Gear	1	2	3	4	5	6	7	8
Feed quantity (g)	305g	315g	375g	400g	440g	470g	500g	525g
Gear	9	10	11	12	13	14	15	16
Feed quantity (g)	550g	590g	610g	660g	690g	735g	775g	800g



## QINGDAO BIG HERDSMAN MACHINERY CO.,LTD

Add: Yuehe road, Konggang industrial park, Qingdao city,  
Shandong Province, PR China

Tel: +86-532-8493 3988

Website: [www.bigherdsman.com](http://www.bigherdsman.com)



SCAN QR CODE ON WECHAT



Simple/Reliable/Green/Efficient

大牧人  
Big Herdsman

## ROOSTER TROUGH FEEDING LINE

This circulating feeding line system, designed for grandparent or parent stock roosters, ensures synchronized feeding and stress reduction by first raising the feed distribution mechanism to fully fill the troughs, then lowering it to optimal feeding height for uniform access.



WEBSITE

✉ [bigherdsman@bigherdsman.com](mailto:bigherdsman@bigherdsman.com)



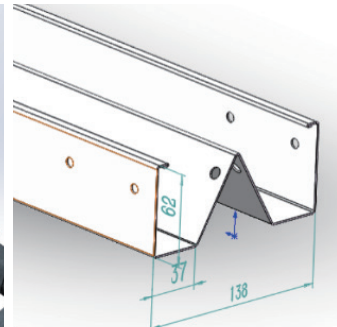
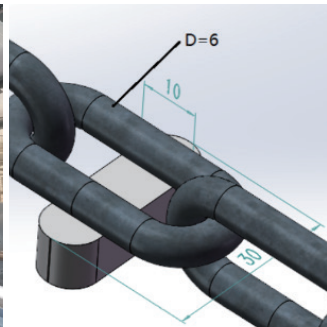
*POULTRY PRODUCTION*

## Technical Description

- The feed distribution speed reaches up to 18m/min with high automation level.
- The lifting-and-lowering feeding mechanism reduces feed competition and improves flock uniformity.
- Adjustable feed volume per unit length (minimum 350g/m per side) accommodates specific breeding requirements.
- Troughs feature 275g national-standard hot-dip galvanized steel with rolled edges, providing rust resistance and poultry-safe design.
- P6-grade welded chain links ensure 1.8-ton tensile strength and high deformation resistance.
- Anti-perching rotating shaft mechanism deters roosting on feeding troughs.

## Product Parameters

<b>Product name</b>	MaleTrough Feeding System
<b>Product component</b>	Product material
<b>Driving motor</b>	3 phase 380V 50HZ 1.5KW IP55 can be customized
<b>Driven part</b>	Hot dip galvanizing, zinc layer thickness $\geq 40\mu\text{m}$
<b>Feed trough</b>	Hot galvanized sheet, $t= 1.2\text{mm}$ , zinc layer thickness $275\text{g}/\text{m}^2$
<b>Anti roost part</b>	PVC round pipe, $\phi 50\text{mm}$ , $t= 2.4\text{mm}$
<b>Chain</b>	Ring material 20Mn, slider material Q235
<b>Suspension part</b>	Pulley, suspension hook, wire rope, lifting chain, etc., for suspension point suspension
<b>Electric lift</b>	3 phase 380V, 50HZ, 0.75KW, IP55, output torque 800N·M, can be customized
<b>Feed box</b>	500L



## QINGDAO BIG HERDSMAN MACHINERY CO.,LTD

Add: Yuehe road, Konggang industrial park, Qingdao city,  
Shandong Province, PR China

Tel: +86-532-8493 3988

Website: [www.bigherdsman.com](http://www.bigherdsman.com)



SCAN QR CODE ON WECHAT



Simple/Reliable/Green/Efficient

大牧人  
Big Herdsman

## CHAIN FEEDING LINE SYNCHRONIZED FEEDING SYSTEM

Fully enclosed feed delivery with even distribution, effectively preventing feed contamination by manure and lowering disease risks.



WEBSITE

✉ [bigherdsman@bigherdsman.com](mailto:bigherdsman@bigherdsman.com)

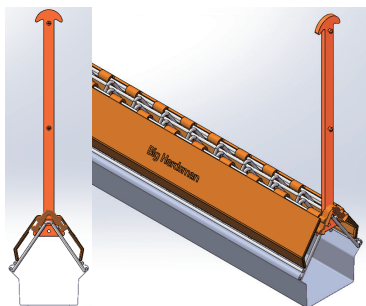


*POULTRY PRODUCTION*

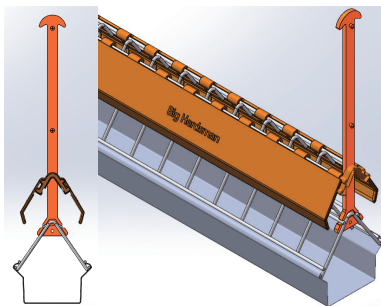
## Technical Description

- Simultaneous feeding minimizes competition and markedly improves flock weight uniformity.
- Hinged linkage structure prevents chickens from getting trapped.
- No need for dismantling—when not in use, simply lift the entire system to a certain height for other operations without interference.
- Clean and feed-saving, reducing labor.

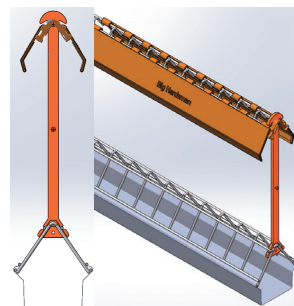
Closed transporting feed condition



Raised feeding condition

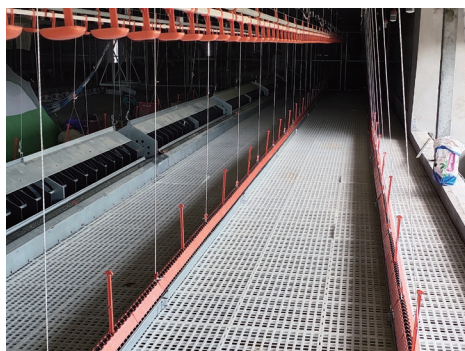


Raised state from culling the chicken to using again



### Parameter

<b>Product name</b>	Chain synchronous feeding system
<b>Product component</b>	Product material
<b>Guide holder</b>	PP polypropylene
<b>Cover plate</b>	PP polypropylene
<b>Grille and lift grille</b>	Hot dip galvanized iron wire
<b>Commutator</b>	Cast iron + conical metal gear
<b>Cardan joint</b>	zinc black
<b>Spool tube</b>	DN25 Hot-dip galvanized pipe DN25
<b>Drive motor</b>	Three-phase 380V, 50HZ, power 0.75KW, protection grade: IP55, output torque 800N•M, can be customized abroad



## QINGDAO BIG HERDSMAN MACHINERY CO.,LTD

Add: Yuehe road, Konggang industrial park, Qingdao city,  
Shandong Province, PR China

Tel: +86-532-8493 3988

Website: [www.bigherdsman.com](http://www.bigherdsman.com)



SCAN QR CODE ON WECHAT



Simple/Reliable/Green/Efficient



## BREEDER CHAIN FEEDING SYSTEM

Suitable for grandparent or parent broiler breeder hens, offers fast feed distribution and high automation. Feed is visible and maintenance-friendly.



WEBSITE

 [bigherdsman@bigherdsman.com](mailto:bigherdsman@bigherdsman.com)



*POULTRY PRODUCTION*



## Main Features

- Drive unit with safety pin mechanism to protect against overload.
- Imported chain with high tensile strength and minimal elongation.
- Corner housing is hot-dip galvanized, corners use cast-steel wheels, rust-free with bearings that require no maintenance.
- Trough connections are riveted instead of welded, boosting rust resistance and longevity.
- Grid size can be customized to prevent roosters from feeding.
- Feed bin includes an anti-overflow wheel to stop feed spillover.



## Product Parameters

Chain Feedline Specification		Chain width 70mm
Motor	Voltage (V)	380
	Frequency (Hz)	50
	Protection Class	IP55
	Power (kw)	2.2
	Speed Ratio	23
	Output Speed (r/min)	65
Chain Speed (m/min)		36
Horizontal Delivery Capacity (kg/h)		3000
Feed Trough Capacity (kg/m)		0.55 - 1.57
Max Horizontal Delivery Distance (m)		250 (4 corners)
Trough Width (mm)		87
Feed Pipe Thickness (mm)		1.2
Trough Material		Hot galvanized sheet
Trough Length (mm)		2997/root



## QINGDAO BIG HERDSMAN MACHINERY CO.,LTD

Add: Yuehe road, Konggang industrial park, Qingdao city,  
Shandong Province, PR China

Tel: +86-532-8493 3988

Website: [www.bigherdsman.com](http://www.bigherdsman.com)



SCAN QR CODE ON WECHAT