

Simple/Reliable/Green/Efficient

大牧人
Big Herdsman



SILO

Stores feed, which can be loaded by feed truck or pneumatic feed blowing.



WEBSITE

✉ bigherdsman@bigherdsman.com



POULTRY PRODUCTION

Technical Description

- Standard ladder with guardrails for safe operation.
- Ridges for enhanced strength and airtightness.
- Mid panel includes a slope for drainage; mid and lower cones have viewing ports secured with sealant strips for superior sealing, strength, and visibility.
- Standard components undergo a specialized galvanizing process; rubber gaskets remain functional for up to 10 years.



Product Parameters

S/N	Nominal outside diameter (lower cone angle)		Actual diameter	Height H	Volume(m³)	Number of legs
1	Φ1.8m 67°	Layer 1	1834	4100	4.4	4
2		Layer2	1834	5000	6.8	4
3		Layer3	1834	5900	9.2	4
4	Φ2.7m 60°	Layer1	2750	4700	11.7	6
5		Layer2	2750	5600	16.9	6
6		Layer3	2750	6500	22.1	6
7		Layer4	2750	7360	27.3	6
8	Φ3.6m 60°	Layer1	3668	5700	24.5	8
9		Layer2	3668	6600	33.8	8
10		Layer3	3668	7500	43.1	8
11		Layer4	3668	8400	52.4	8

※ The conversion between the volume and tonnage of galvanized sheet silo is calculated according to the density of 0.65t/m³: tonnage = volume *0.65t/m³.



QINGDAO BIG HERDSMAN MACHINERY CO.,LTD

Add: Yuehe road, Konggang industrial park, Qingdao city,
Shandong Province, PR China

Tel: +86-532-8493 3988

Website: www.bigherdsman.com



SCAN QR CODE ON WECHAT

Simple/Reliable/Green/Efficient

大牧人
Big Herdsman



SILO ANTI-CORROSION MAT INSULATION COATING

Employs cost-effective nano anti-corrosion and insulating galvanized sheets, including base steel plate, a high-molecular conversion layer, a selective reflection insulating layer, a nano coating (acid-base protection layer), and a galvanized layer.



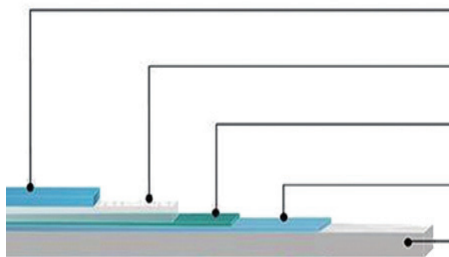
WEBSITE

✉ bigherdsman@bigherdsman.com



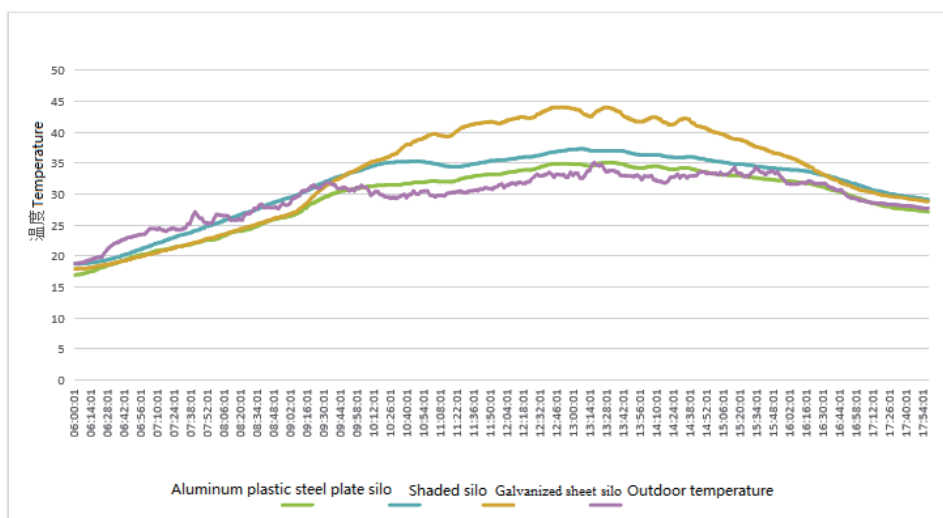
POULTRY PRODUCTION

Technical Description



Name	Feature
Anti-aging PET	Anti-aging, anti-chemical corrosion, UV blocking penetration
Anti-aging adhesive	UV resistant anti-aging bonding layer
Aluminum foil layer	Resistant to UV aging, chemical corrosion
High temperature, polymer	Strong bonding, weatherability and scalability
Galvanized sheet	Double-sided galvanized layer, anti-corrosion, rust resistance

- Exceptional weather resistance, acid and alkali corrosion resistance, and insulation, extending the product's lifespan.
- Easy to install, identical to ordinary silos, eliminating secondary construction.
- Reflects 85% of heat, effectively maintaining feed temperature to reduce mold and improve feeding efficiency.



The comparative experiment of thermal insulation performance show that the aluminum plastic steel plate silo has high thermal insulation performance.

NO1.	Actual diameter	Tier	Height/m	Volume/m³	ton/t	Uprights Quantity
1	1834	1	4100	4.4	2.8	4
2		2	5000	6.8	4.4	4
3		3	5900	92	6	4
4	2750	1	4700	11.7	7.6	6
5		2	5600	16.9	11	6
6		3	6500	22.1	14.3	6
7		4	7360	27.3	17.7	6
8	3660	2	6600	33.8	22	8
9		3	7500	43.1	28	8
10		4	8400	52.4	34	8

QINGDAO BIG HERDSMAN MACHINERY CO.,LTD

Add: Yuehe road, Konggang industrial park, Qingdao city,
Shandong Province, PR China

Tel: +86-532-8493 3988

Website: www.bigherdsman.com



SCAN QR CODE ON WECHAT

Simple/Reliable/Green/Efficient

大牧人
Big Herdsman

MAIN FEED LINE

Spiral auger or chain-based system that transports feed from silos or bins to each sub-feeding line, achieving automatic feed distribution.



WEBSITE

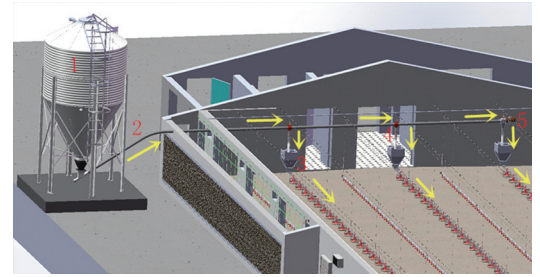
✉ bigherdsman@bigherdsman.com



POULTRY PRODUCTION

Main Feed Line

- Italian-brand motor, aluminum alloy body, IP55-protected.
- Auger imported for stable performance.
- Nylon bends with reinforced inner arcs for wear resistance and sealing.
- Each relay station is angle-adjustable with an inspection port and sight window for easy maintenance.



Product parameters

Specification of auger feed line	125	90		75
Motor power	1.5	0.75	1.1	0.75
Feeding capacity	5500	2100	3000	1400
Maximum conveying distance	25	40		60

Chain Pan Main Feed Line

The feed line moves in the feeding pipe through the chain, and the nylon chain pan molded on the chain drives the feed to move in the feeding pipe, and the feed is transported from the silo or manual feed box dragged by the chain along the feeding pipe to feed drop ports, so as to achieve the purpose of automatic feed.

- The drive system is provided with overload protection, which can effectively prevent motor stalling and chain damage due to pulling;
- The chain pan is made of modified nylon, with high wear resistance and not easy to be shifted;
- The corner is made of antirust material, firm and durable.



Product parameters

Feeding pipe diameter (mm)	Φ 101.6		Φ 60
Feeding pipe wall thickness (mm)	2.0		1.5
Feeding pipe material	Hot galvanized pipe		Hot galvanized pipe
Driving power (kw)	4	2.2	1.5
Maximum feeding capacity (kg/h)	5000		1500
Maximum conveying distance (m)	250	120	300

QINGDAO BIG HERDSMAN MACHINERY CO.,LTD

Add: Yuehe road, Konggang industrial park, Qingdao city,
Shandong Province, PR China

Tel: +86-532-8493 3988

Website: www.bigherdsman.com



SCAN QR CODE ON WECHAT

Simple/Reliable/Green/Efficient

大牧人
Big Herdsman



45 AUGER FEEDING LINE

Uses a spiral auger to move feed through the pipe. A feed sensor at the end of each branch line automatically starts/stops the motor for precise feeding.



WEBSITE

✉ bigherdsman@bigherdsman.com



POULTRY PRODUCTION

45 AUGER FEEDING LINE

45 Broiler Auger Feeding System

- A Italian-brand motor is employed for drive. It has an aluminum alloy housing providing fast heat dissipation, no rust, and protection grade of IP55;
- The auger is made of imported high-performance material, with stable performance;
- The feed pan includes two types: 14-grill internal adjustable and external adjustable types, and the breeding capacity is about 170 kg/ pan;
- Manual lifting or electric lifting are options for lifting, convenient for adjusting the height of feed line;



Product parameters

Auger Feedline Specification		45 Weld Pipe	
Feed Pipe Diameter (mm)		Φ 45	
Feed Pipe Thickness (mm)		1.2	
Feed Pipe Material		Hot galvanized pipe	
Motor	Voltage (V)	380	
	Frequency (Hz)	50	
	Protection Class	IP55	
	Power (kw)	0.75	1.1
	Speed Ratio	1:5	
	Output Speed (r/min)	290	
Horizontal Delivery Capacity (kg/h)		450	
Max Delivery Distance (m)		120	140
Feed Pipe Length (mm)		3040	
Auger Outer Diameter (mm)		36.8	
Auger Inner Diameter (mm)		20.8	
Auger Cross - section Width (mm)		8	
Auger Cross - section Thickness (mm)		3.85	
Auger Pitch (mm)		44.45	



Feed Quantity of 14-grill Internal Adjustable Feed Pan

Gear	1	2	3	4	5
Feed quantity (g)	260	275	360	400	520
Gear	6	7	8	9	10
Feed quantity (g)	530	610	640	770	850



Feed Quantity of 14-grill External Adjustable Feed Pan

Gear	1	2	3	4	5 档
Feed quantity (g)	830	845	1090	1280	1320

45 AUGER FEEDING LINE

45 Auger Feeding System For Males

- A Italian-brand motor is employed for drive. It has an aluminum alloy housing providing fast heat dissipation, no rust, and protection grade of IP55;
- The auger is made of imported high-performance material, with stable performance;
- The feed pan includes nine-grill and five-grill types, and each feed pan is for 8-10 chickens;
- Manual lifting or electric lifting are options for lifting, convenient for adjusting the height of feed line;



Product Parameters

Auger Feedline Specification		45 Weld Pipe	
Feed Pipe Diameter (mm)		Φ45	
Feed Pipe Thickness (mm)		1.2	
Feed Pipe Material		Hot galvanized pipe	
Motor	Voltage (V)	380	
	Frequency (Hz)	50	
	Protection Class	IP55	
	Power (kw)	0.75	1.1
	Speed Ratio	1:5	
	Output Speed(r/min)	290	
Horizontal Delivery Capacity (kg/h)		450	
Max Delivery Distance (m)		120	140
Feed Pipe Length (mm)		3040	
Auger Outer Diameter (mm)		36.8	
Auger Inner Diameter (mm)		20.8	
Auger Cross section Width (mm)		8	
AugerCross section Thickness (mm)		3.85	
Auger Pitch (mm)		44.45	

Feed Quantity of Nine-grill Feed Pan

Gear	1 档	2 档	3 档	4 档	5 档	6 档	7 档	8 档
Feed quantity (g)	465g	500g	550g	590g	635g	680g	725g	770g
Gear	9 档	10 档	11 档	12 档	13 档	14 档	15 档	16 档
Feed quantity (g)	815g	875 g	935g	995g	1060g	1125g	1190 g	1260g

Feed Quantity of Five-grill Breeder Feed Pan:

Gear	1	2	3	4	5
Feed quantity (g)	750	820	900	990	1080
Gear	6	7	8	9	10
Feed quantity (g)	1170	1270	1380	1490	1600

Case



QINGDAO BIG HERDSMAN MACHINERY CO.,LTD

Add: Yuehe road, Konggang industrial park, Qingdao city,
Shandong Province, PR China

Tel: +86-532-8493 3988

Website: www.bigherdsman.com



SCAN QR CODE ON WECHAT